

Robust & Equitable Measures to Inspire Quality Schools (REMIQS): School Identification Phase.

KnowledgeWorks in partnership with WestEd is working with states from across the U.S. to identify and learn from schools that excel at supporting historically marginalized students. This infographic describes the process through which these schools were identified for case study.



Level 1: Filtering criteria

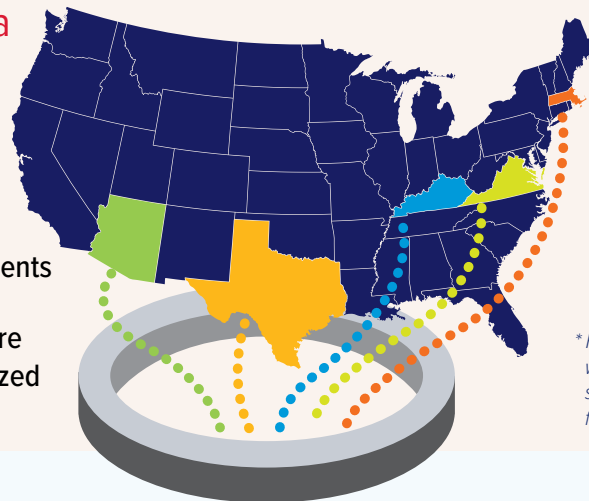
- High schools
- No selective admissions criteria
- 100 or more 9th grade students
- At least 25% of students are from historically marginalized backgrounds*



States

- Arizona
- Kentucky
- Massachusetts
- Texas
- Virginia

** Historically marginalized students refers to students who identify as Black, Latinx, indigenous, or multiracial; students from low-income families; students who qualify for special education services; and English learners.*



Level 2: Analysis of school factors

We account for a number of important factors that influence school performance.

- Student demographics
- Teacher workforce composition
- School characteristics
- District characteristics and finances
- Student achievement

○ Some students underperform

◐ Some students perform on average



Some students perform better than expected



Level 3: Identification



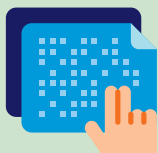
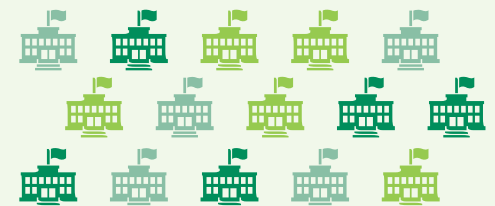
High School

● Postsecondary enrollment

● Entry into the labor force

Students' 8th grade test scores are used to ensure we compare high schools that have students with similar achievement as we track them through high school and onto enrollment in postsecondary and/or into the labor force. We then use predictions from our statistical model to compare actual and expected school performance.

... **15** schools across all five states are identified for in-depth case studies.



KnowledgeWorks will convene project advisors, a stakeholder committee, and funders to select 15 schools across the five states to be studied in-depth. The investigation of those 15 schools will illuminate which school-level practices, policies, features, and designs can be counted on to achieve equity in secondary education.